

MAXMAN

Stock Support 2018 - 2019

Quick Response Stock Service



BARONI MaxDavoli Privé trend



BARONI
Gentlemen's Fit



MaxDavoli
Modern Fit



Privé
Contemporary Fit



trend
Slim Fit

Stock Solid Suits, Slacks, and Vests

Available in BARONI – MAXDAVOLI – PRIVE

Available in TREND : (TDS) Straight Pocket and (TDH) Hacking Ticket Pocket



Flat Front Slacks

BARONI & PRIVÉ : All colors

MAXDAVOLI & TREND:

| | |
|----------|--------------|
| Black | Navy |
| Charcoal | Blue |
| Grey | Italian Blue |

French Blue



Vests

BARONI:

Black
Charcoal
Grey
Navy
Blue

TREND:

Black
Charcoal
Grey
Blue



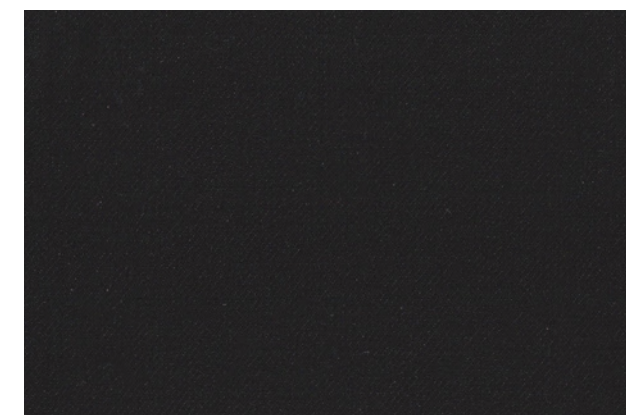
2 Pleat Slacks

Available ONLY in BARONI:

| | |
|----------|-------------|
| Black | Navy |
| Charcoal | Blue |
| Grey | French Blue |

Stock Solid Suits, Slacks, and Vests

Baroni Suits Only : Extra Long Available In Black, Navy, Charcoal, And Blue



BA/MD/PR 2800 Black
TD 2110 Black



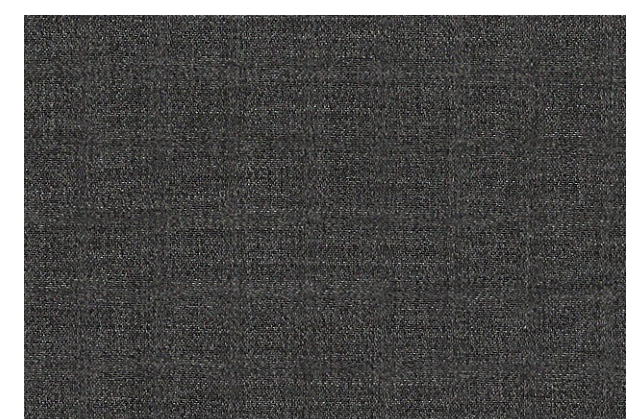
BA/MD/PR 2800 Navy
TD 2110 Navy



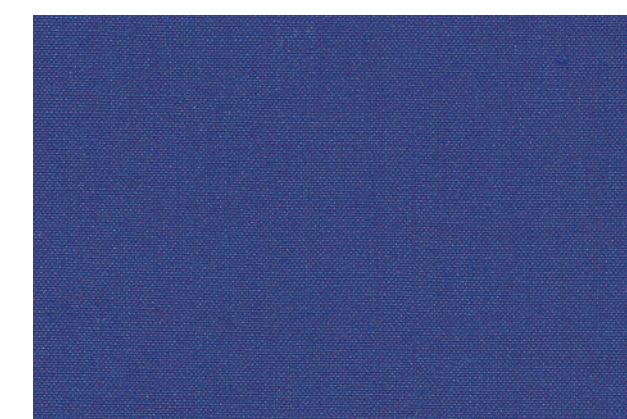
BA/MD/PR 2800 Charcoal
TD 2110 Charcoal



BA/MD/PR 2800 Blue
TD 2110 Blue



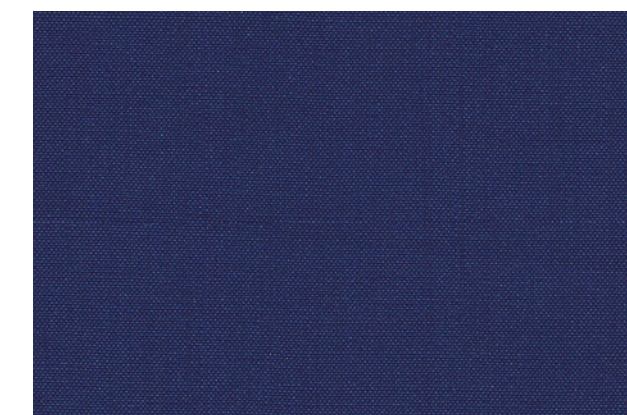
BA/MD/PR 2800 Grey
TD 2110 Grey



BA/MD/PR 2800 French Blue
TD 2110 French Blue



BA/PR 2800 Sand



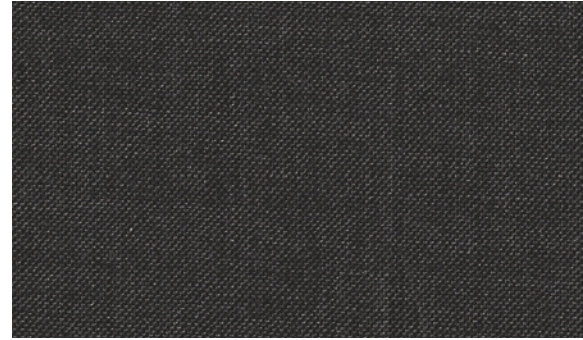
NEW BA/MD/PR 2800 Italian Blue
TD 2110 Italian Blue

Stock Sharkskin Suits and Slacks

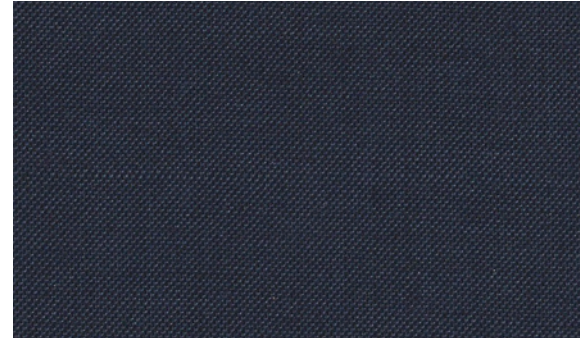
Available in BARONI – MAXDAVOLI – PRIVE

Available in TREND : (TDS) Straight Pocket and (TDH) Hacking Ticket Pocket

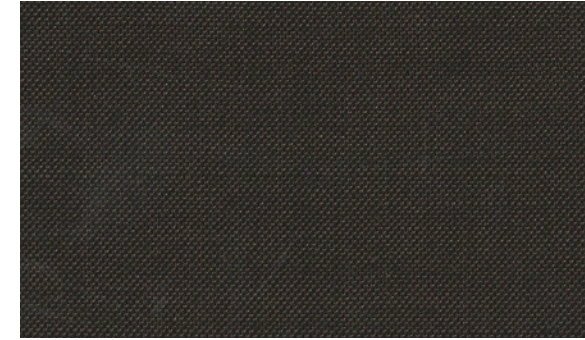
BARONI Only: Slacks available in separate Flat Front



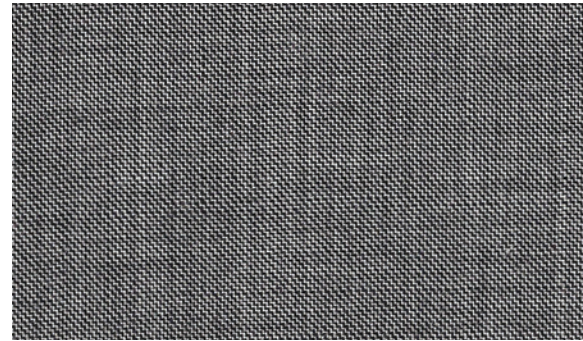
BA/MD/PR 8005/2 Charcoal
TD 8885/2 Charcoal



BA/MD/PR 8005/8 Blue
TD 8885/8 Blue



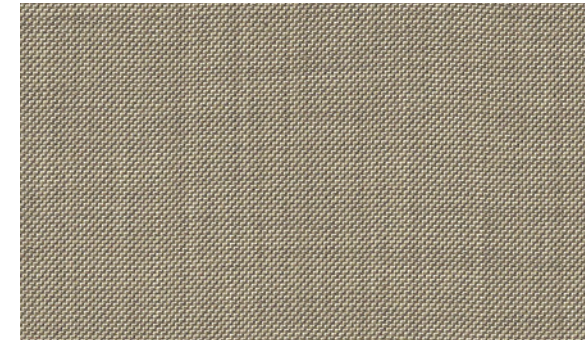
BA/MD/PR 8005/12 Brown



BA/MD/PR 8005/42 Lt. Grey
TD 8885/42 Lt. Grey



BA/MD/PR 8005/88 French Blue
TD 8885/88 French Blue

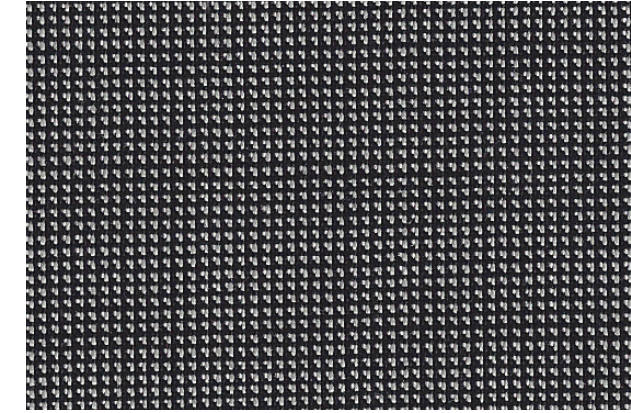
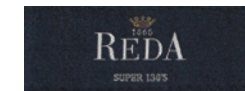


BA/MD/PR 8005/18 Tan

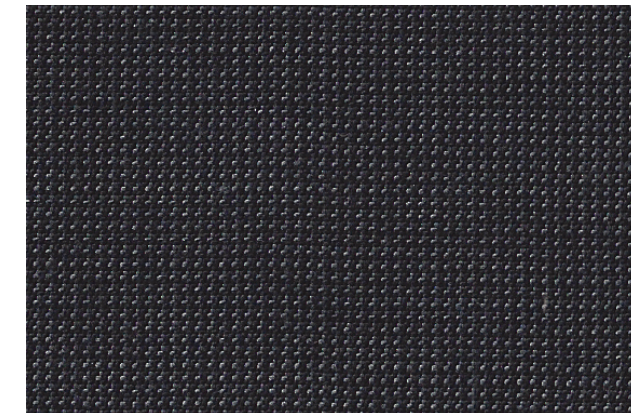


Stock Pindot Suits

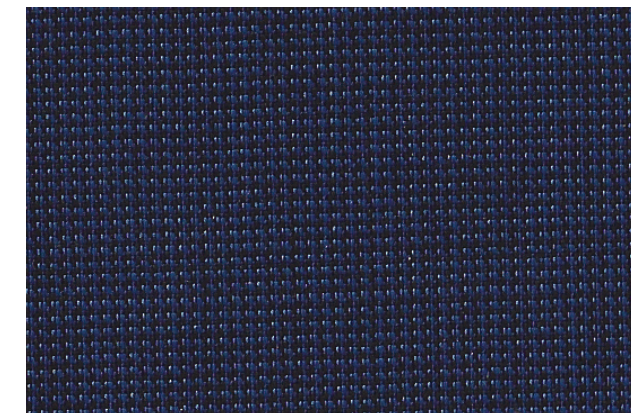
Available in MAXDAVOLI and PRIVE



MD/PR 146019/12 Grey



MD/PR 146019/18 Charcoal



MD/PR 146019/81 Blue



Stock Baroni Tuxedos
Available with Flat Front or 1 Pleat Slacks



BA Tuxedo:
1 Button
Peak Lapel



BA Tuxedo:
1 Button
Notch Lapel



BA Tuxedo:
2 Button
Notch Lapel



Tuxedo Slacks

Stock Tuxedos



MaxDavoli Tuxedo – 1-Button Shawl

Shawl Collar-Side Vents-Double Bessom Pocket
Available in Black and Blue

MaxDavoli Tuxedo – 1-Button Notch



NEW MDTUX 3003/73 Black

Trend Tuxedos – 2-Button Notch
Available in Black and Blue



Privé Tuxedo
1 Button Notch- Black



TDA TUX
Ardito Model (Wide Lapel)



TDF TUX
Fresco Model (Narrow Lapel)

NEW Peak Lapel Suits



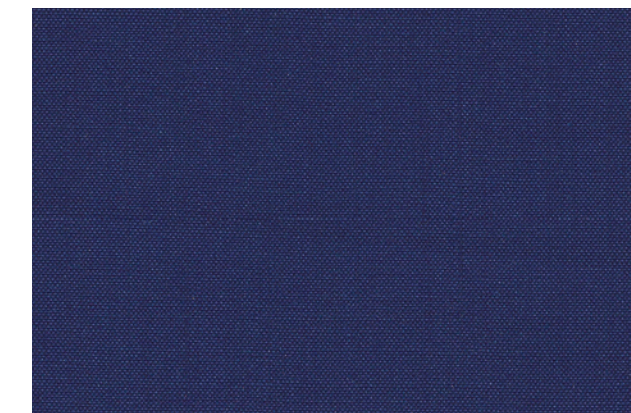
TDPL 2110 Italian Blue

Peak Lapel Suits

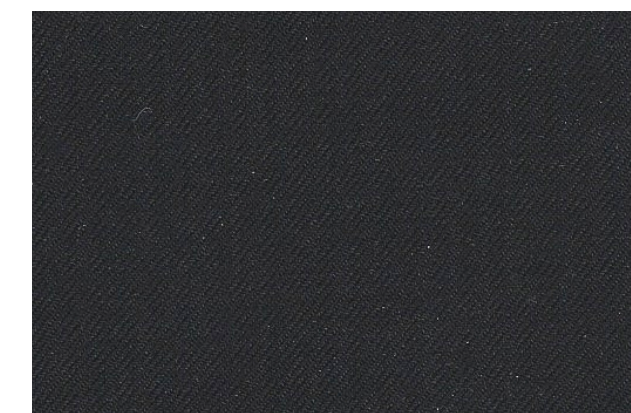
Available in: MAXDAVOLI: Straight Pockets
TREND: Straight Pockets with Ticket Pocket



NEW MDPL 2800/TDPL 2110 Black

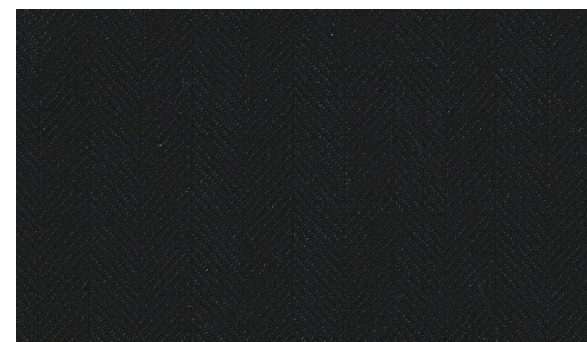


NEW MDPL 2800/TDPL 2110 Italian Blue

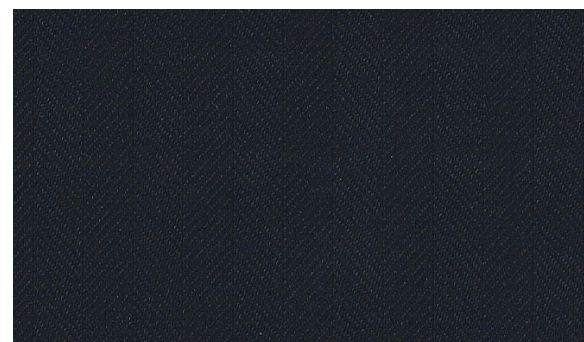


NEW MDPL/TDPL 3003/73 Black

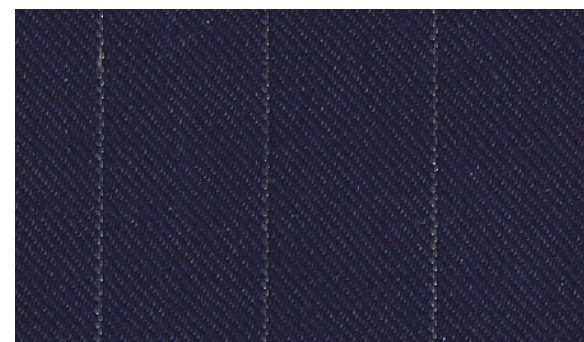
Stock MaxDavoli Herringbone & Stripe Suits



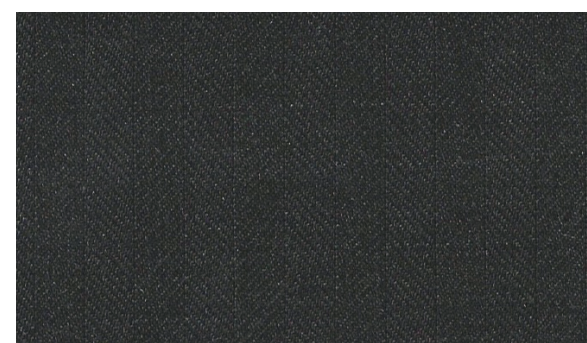
MD 8525/17 Black



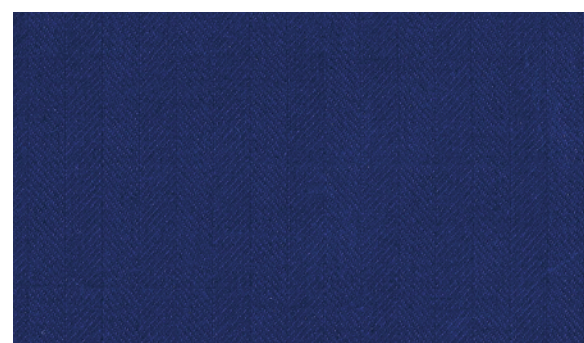
MD 8525/18 Navy



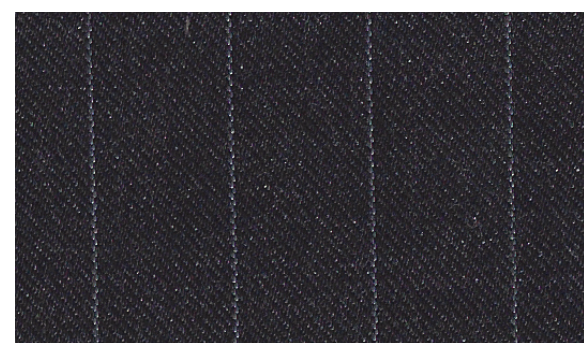
MD 1500/4 Blue



MD 8525/19 Charcoal



MD 8525/20 Blue



MD 1500/7 Charcoal



Suit: MD 8525/18 Navy Herringbone



Suit: MD 1500/4 Blue Stripe

**Seasonal Suits
Baroni – MaxDavoli – Prive – Trend**



Suit: BA 6090/2 Charcoal

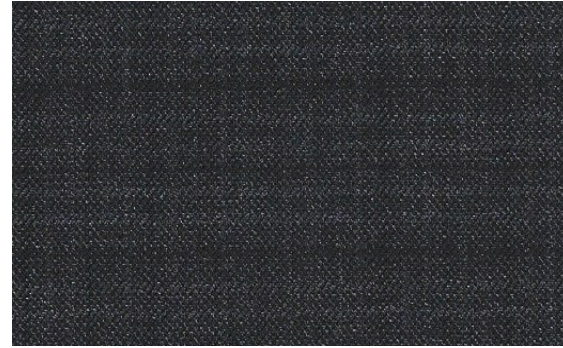


Suit: TD 1501/3 Blue

Seasonal Suits
Baroni – MaxDavoli – Prive - Trend



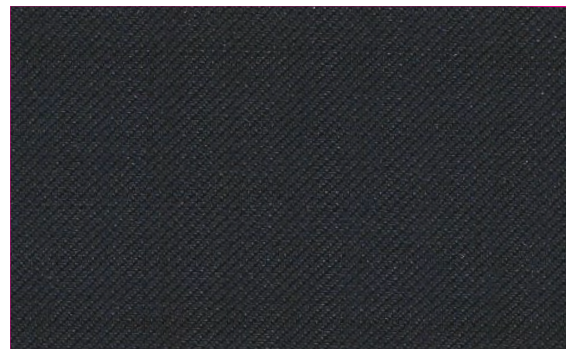
BA/PR 1012/4 Blue Check



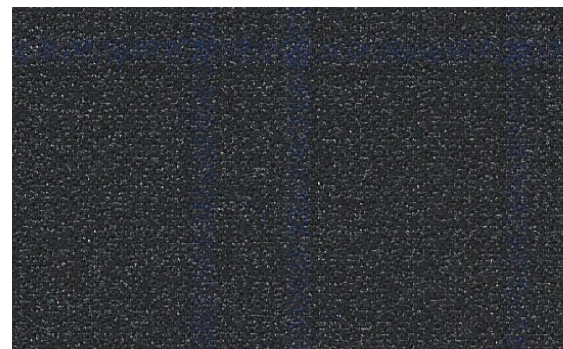
MD/PR 1501/2 Charcoal



MD/TD 1501/3 Blue



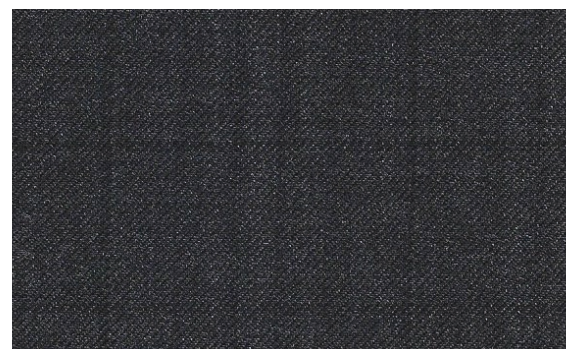
MD/TD 1578/1 Black



BA/TD 6090/2 Charcoal



BA/PR 6712/3 Blue Plaid



BA/MD/TD 6718/1 Charcoal Plaid

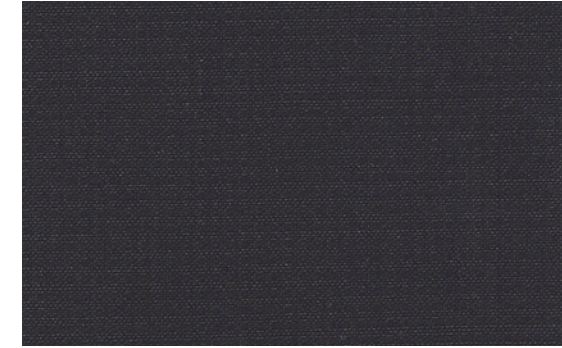


MD/TD 6718/2 Blue Plaid

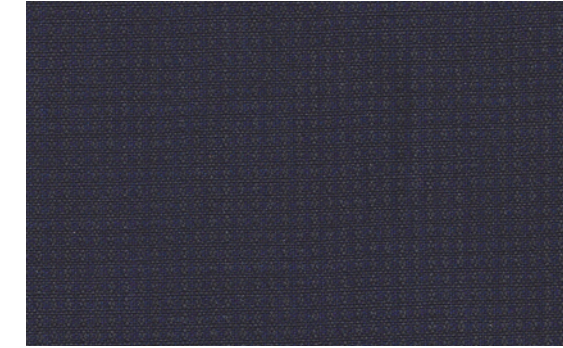


BA 7491 Grey Plaid

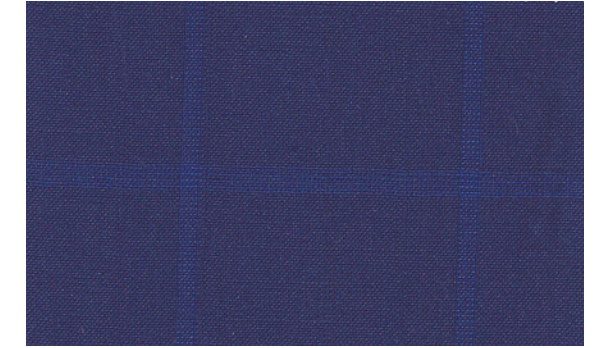
Seasonal Suits
Baroni – MaxDavoli – Prive - Trend



BA/MD/PR/TDH 1511 Black



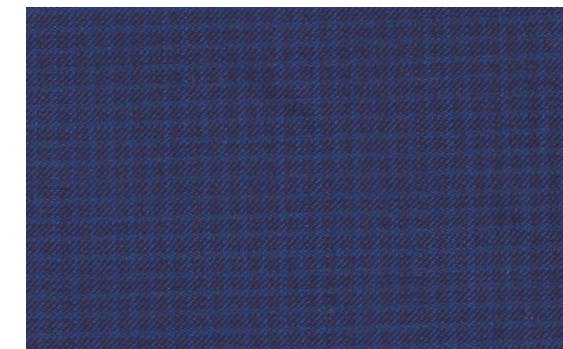
BA/MD/PR/TDH 1513 Navy



MD 1022 Blue Windowpane



MD/PR 1462 Charcoal



MD 5044 Blue Mini Check



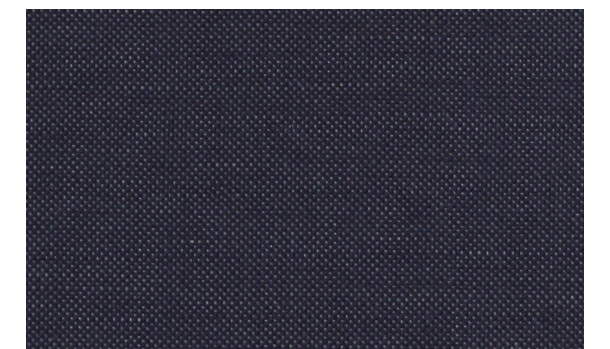
TDH 7191 Grey Windowpane



TDH 7192 Blue Windowpane



TDH 18/1 Grey Pindot - With Ticket Pocket
(Also available in Ardito Model)



TDH 18/2 Blue Pindot - With Ticket Pocket
(Also available in Ardito Model)

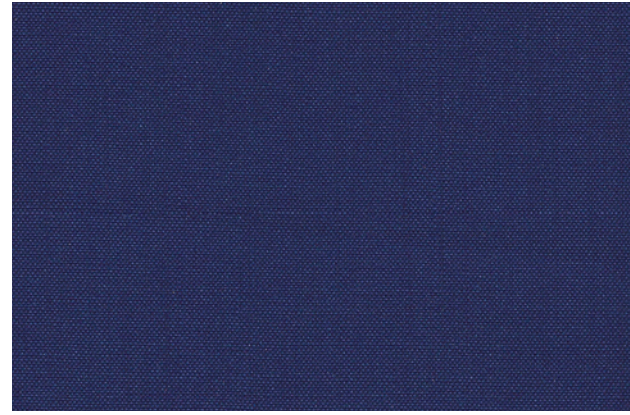
Stock Baroni & Privé Blazers

Flap Pockets - Mother of Pearl Buttons

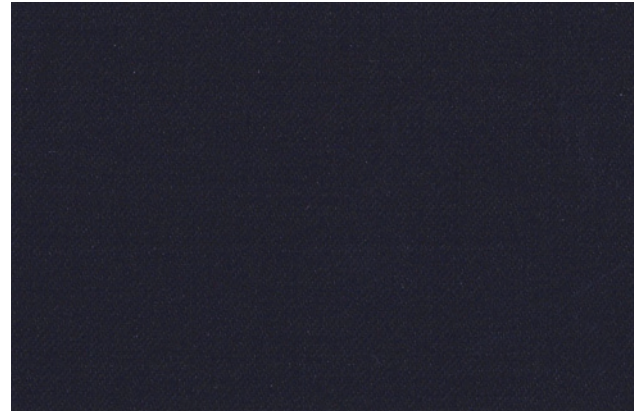
Baroni Blazer In Black And Navy Also Available With Gold Buttons



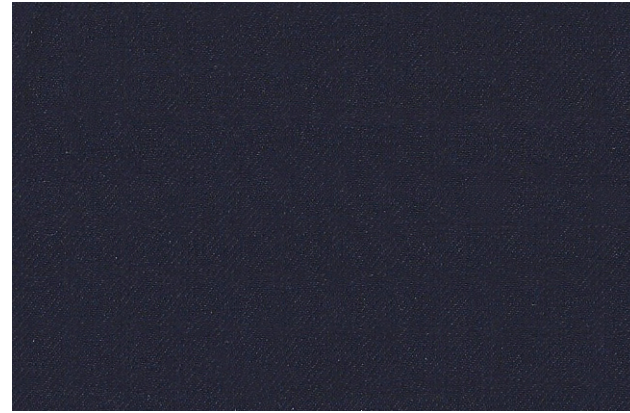
BA/PR Blazer Black



BA/PR Blazer French Blue



BA/PR Blazer Navy



BA Blazer Blue



BA Blazer Blue



PR Blazer French Blue

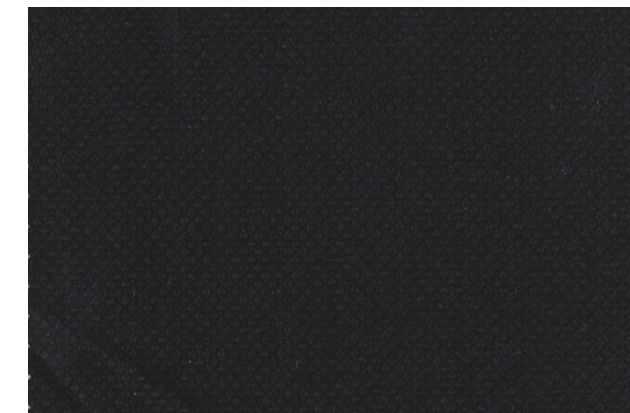
Stock MaxDavoli & Trend Blazers

MaxDavoli: Flap Pocket - Mother of Pearl Buttons

Trend: Straight Ticket Pocket - Brown Buttons



MD/TD 8001/1 Dark Blue



MD/TD 8001/2 Black



MD/TD 8001/30 French Blue



MD 8001/1 Dark Blue



TD 8001/30 French Blue

MaxDavoli & Trend Seasonal Coats

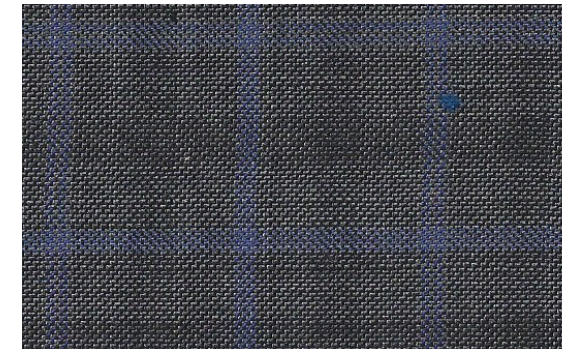


Tailored Coat: MD 7434/2 Blue/Brown Plaid

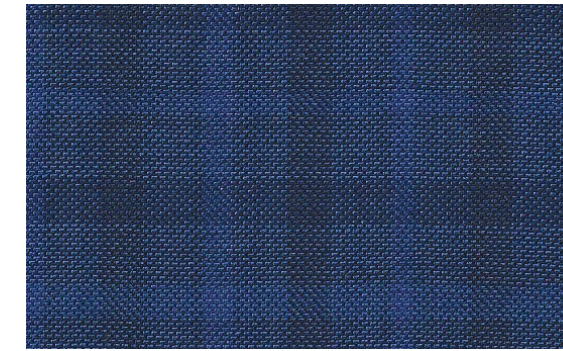


Soft Coat: TD 5838/3 Blue/Rust Check
Patch Pocket

MaxDavoli & Trend Seasonal Coats



MD 6115/10 Grey Check
Tailored Coat | Zignone | 100% Wool



MD 6115/12 Blue Check
Tailored Coat | Zignone | 100% Wool



MD 6128/4 Navy Plaid
Tailored Coat | Zignone | 100% Wool



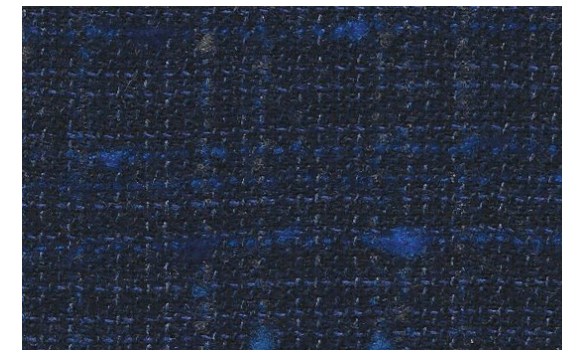
MD 7434/2 Blue/Brown Plaid
Tailored Coat | Reda: 100% Wool



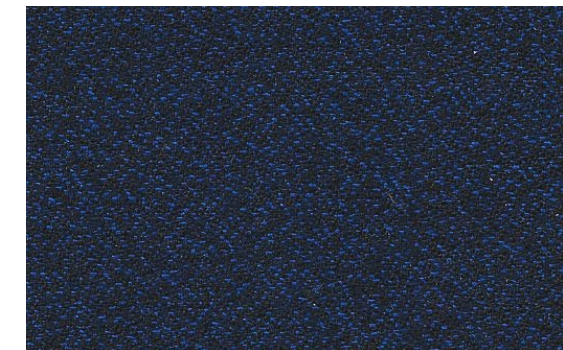
MD 2054/1 Brown/Blue Plaid
Soft Coat | Di Pray | 96% Wool /4% PL



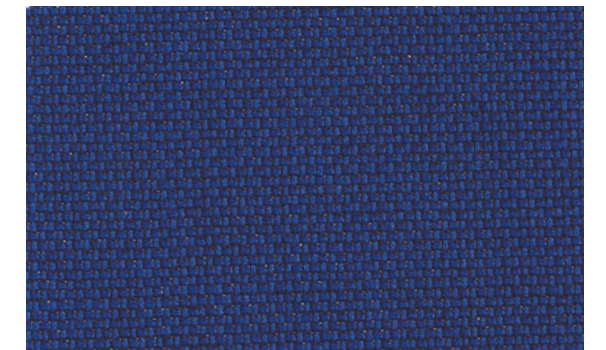
MD 9223/2 Rust Check
Soft Coat | Tessilstrona | 100% Wool



TD 2004/6 Blue
Soft Coat | Zignone | 97% Wool /3% PA
Ticket Pocket



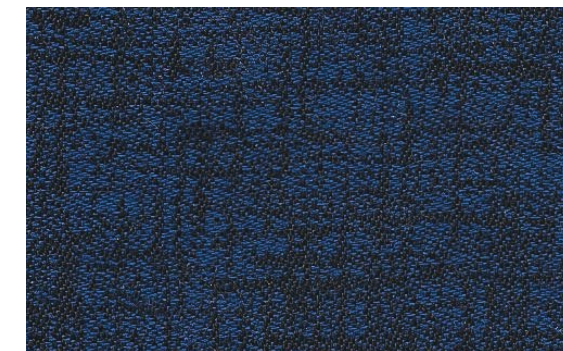
TD 2011/40 Blue
Soft Coat | Zignone | 100% Wool
Ticket Pocket



MD 1103 Blue
Soft Coat | Drago | 100% Wool



TD 5838/3 Blue/Rust Check
Soft Coat | Barberis | 80% Wool /20% Silk
Patch Pocket

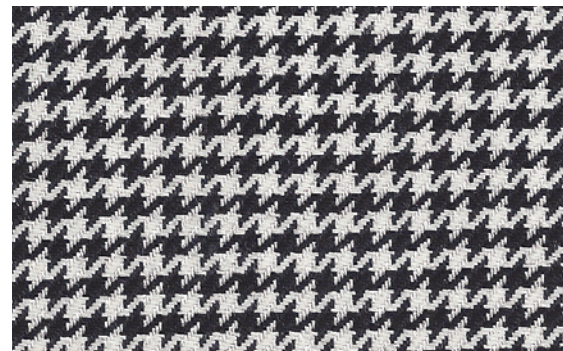


TD 6284/6 Blue
Soft Coat | Tessilstrona | 100% Wool
Ticket Pocket



TD 8115/2 Blue/Black Check
Soft Coat | Quaregna | 80% Wool /20% PA
Ticket Pocket

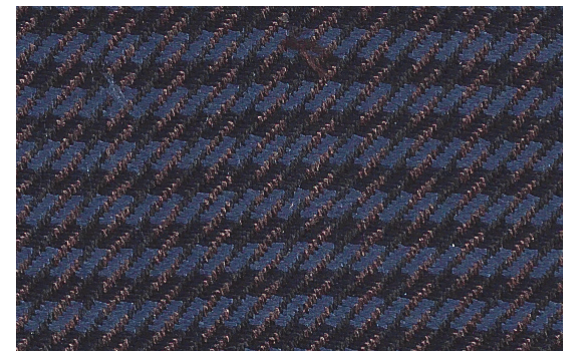
Seasonal Baroni Tailored Coats



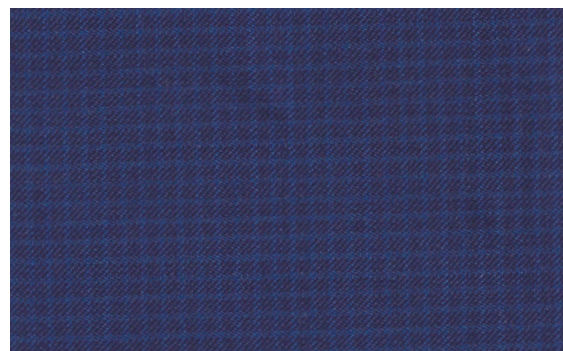
BA 449/23 Black/White Houndstooth
Quaregna | 55% Silk / 45% Wool



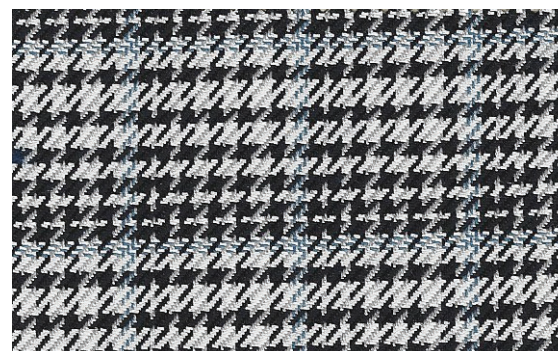
BA 449/28 Rust Houndstooth
Quaregna | 55% Silk / 45% Wool



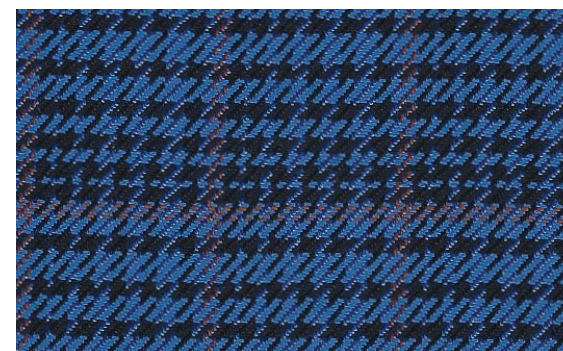
BA 449/29 Blue Houndstooth
Quaregna | 55% Silk / 45% Wool



BA 0142 Blue Houndstooth
Tessilstrona | 54% Silk / 46% Wool



BA 5120/1 Black/White Houndstooth Plaid
Tessilstrona | 54% Silk / 46% Wool



BA 5120/3 Blue Houndstooth Plaid
Tessilstrona | 54% Silk / 46% Wool



BA 5124/8 Grey/Blue Plaid
Tessilstrona | 54% Silk / 46% Wool



BA 5128/1 Black/Violet Check
Tessilstrona | 54% Silk / 46% Wool



BA 449/28 Rust Houndstooth



BA 449/23 Black/White Houndstooth

SIZE SCALES

Specification Table For 2 Button Coat

BARONI

| SPECIFICATION | SIZE | 36 | 38 | 40 | 42 | 44 | 46 | 48 | 50 | 52 | 54 |
|--------------------|-------|--------|--------|--------|--------|--------|--------|--------|--------|--------|--------|
| COAT LENGTH (BACK) | REG | 29 1/8 | 29 3/8 | 29 5/8 | 29 7/8 | 30 1/8 | 30 3/8 | 30 5/8 | 30 7/8 | 31 1/8 | 31 3/8 |
| | SHORT | 27 5/8 | 27 7/8 | 28 1/8 | 28 3/8 | 28 5/8 | 28 7/8 | | | | |
| | LONG | | | 31 | 31 1/4 | 31 1/2 | 31 3/4 | 32 | 32 1/4 | 32 1/2 | 32 3/4 |
| | XL | | | | 32 5/8 | 32 7/8 | 33 1/8 | 33 3/8 | 33 5/8 | 33 7/8 | 34 1/8 |
| SLEEVES (INSEAM) | REG | 16 7/8 | 16 7/8 | 16 7/8 | 16 7/8 | 16 7/8 | 16 7/8 | 16 7/8 | 16 7/8 | 16 7/8 | 16 7/8 |
| | SHORT | 15 7/8 | 15 7/8 | 15 7/8 | 15 7/8 | 15 7/8 | 15 7/8 | | | | |
| | LONG | | | 17 7/8 | 17 7/8 | 17 7/8 | 17 7/8 | 17 7/8 | 17 7/8 | 17 7/8 | 17 7/8 |
| | XL | | | | 18 7/8 | 18 7/8 | 18 7/8 | 18 7/8 | 18 7/8 | 18 7/8 | 18 7/8 |

MaxDavoli

| SPECIFICATION | SIZE | 36 | 38 | 40 | 42 | 44 | 46 | 48 | 50 | 52 |
|--------------------|-------|--------|--------|--------|--------|--------|--------|--------|--------|--------|
| COAT LENGTH (BACK) | REG | | 29 3/8 | 29 5/8 | 29 7/8 | 30 1/8 | 30 3/8 | 30 5/8 | 30 7/8 | 31 1/8 |
| | SHORT | 28 1/8 | 28 3/8 | 28 5/8 | 28 7/8 | 29 1/8 | | | | |
| | LONG | | | 30 5/8 | 30 7/8 | 31 1/8 | 31 3/8 | 31 5/8 | 31 7/8 | 32 1/8 |
| SLEEVES (INSEAM) | REG | | 17 1/4 | 17 1/4 | 17 1/4 | 17 1/4 | 17 1/4 | 17 1/4 | 17 1/4 | 17 1/4 |
| | SHORT | 16 1/4 | 16 1/4 | 16 1/4 | 16 1/4 | 16 1/4 | | | | |
| | LONG | | | 18 1/4 | 18 1/4 | 18 1/4 | 18 1/4 | 18 1/4 | 18 1/4 | 18 1/4 |

Privé

| SPECIFICATION | SIZE | 36 | 38 | 40 | 42 | 44 | 46 | 48 |
|--------------------|-------|--------|--------|--------|--------|--------|--------|--------|
| COAT LENGTH (BACK) | REG | 28 3/4 | 29 | 29 1/4 | 29 1/2 | 29 3/4 | 30 | |
| | SHORT | 27 1/4 | 27 1/2 | 27 3/4 | 28 | | | |
| | LONG | | | 30 5/8 | 30 7/8 | 31 1/8 | 31 3/8 | 31 5/8 |
| SLEEVES (INSEAM) | REG | 17 5/8 | 17 5/8 | 17 5/8 | 17 5/8 | 17 5/8 | 17 5/8 | |
| | SHORT | 16 5/8 | 16 5/8 | 16 5/8 | 16 5/8 | | | |
| | LONG | | | 18 5/8 | 18 5/8 | 18 5/8 | 18 5/8 | 18 5/8 |

trend

| SPECIFICATION | SIZE | 32 | 34 | 36 | 38 | 40 | 42 | 44 | 46 | 48 |
|--------------------|-------|--------|--------|--------|--------|--------|--------|--------|--------|--------|
| COAT LENGTH (BACK) | REG | 28 | 28 1/4 | 28 1/2 | 28 3/4 | 29 | 29 1/4 | 29 1/2 | 29 3/4 | 30 |
| | SHORT | | 26 3/4 | 27 | 27 1/4 | 27 1/2 | 27 3/4 | | | |
| | LONG | | | 29 7/8 | 30 1/8 | 30 3/8 | 30 5/8 | 30 7/8 | 31 1/8 | 31 3/8 |
| SLEEVES (INSEAM) | REG | 17 3/8 | 17 3/8 | 17 3/8 | 17 3/8 | 17 3/8 | 17 3/8 | 17 3/8 | 17 3/8 | 17 3/8 |
| | SHORT | | 16 3/8 | 16 3/8 | 16 3/8 | 16 3/8 | 16 3/8 | | | |
| | LONG | | | 18 3/8 | 18 3/8 | 18 3/8 | 18 3/8 | 18 3/8 | 18 3/8 | 18 3/8 |

MAXMAN



All images are © Maxman Inc. 2018

Stock Support 2018 - 2019

Quick Response Stock Service

LOS ANGELES OFFICE:

Tel: 213.537.0125

Toll Free: 877.922.7664

877.9BARONI

Fax: 213.537.0791

HOURS OF OPERATION:

Monday - Friday

8:30 - 5:00 (Pacific Time)

Email: baroni@maxmaninc.com

Website: maxmaninc.com